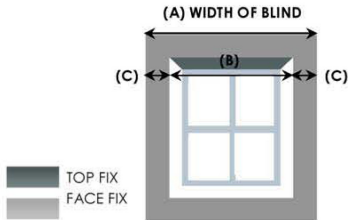


Fitting Instructions: Vertical Blinds

STEP 1



Outside Recess

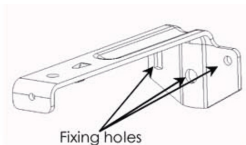
If the blind is to be fitted outside the window ensure that measurement C is the same. C is simply equal to A minus B, divided by two. Follow instructions for FACE FIXING.

Inside Recess

If TOP FIXING, fix to the lintel if the window frame is uPVC or if there are no obstructions. If FACE FIXING, fit bracket to the window frame.

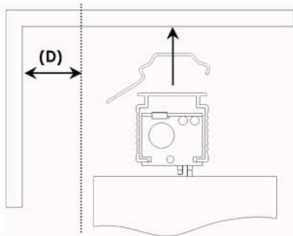
STEP 2

Face Fixing



Position brackets approx 5cm from the ends of the headrail. Mark fixing holes and screw brackets into place.

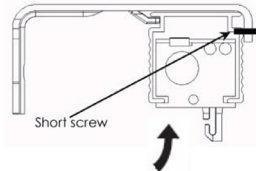
Top Fixing



Measure and mark the distance (D), allowing for obstructions like handles that protrude into the recess area. Hold the blind in the recess and find the bracket fixing position. Drill brackets into position 5cm from the recess side walls.

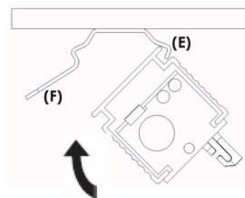
STEP 3

Face Fixing



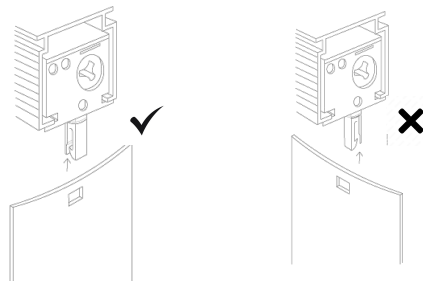
Hook the back of the headrail into the bracket and rotate the headrail into position. Secure headrail by tightening the short screw in the front of the bracket.

Top Fixing



Tilt and hook headrail into bracket at point (E). Rotate the headrail into position until it clicks. To release the headrail push the bracket at point (F).

STEP 4



With the headrail fitted hook each hanger into the louvres ensuring the louvres are in open position.

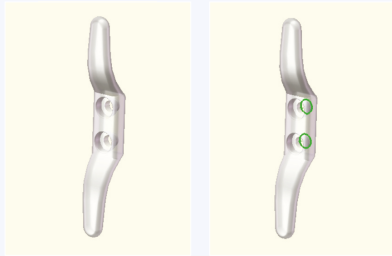
WARNING

WHERE POSSIBLE BLIND CHAIN SHOULD BE OPERATED FROM JUST ABOVE THE CHAIN CONNECTOR AS THIS PUTS LESS PRESSURE ON THIS COMPONENT, REDUCING THE RISK OF SNAPPING OR PULLING APART.

Safety Cleat Fitting Instructions

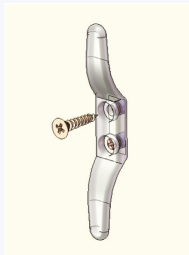
Step 1

- Place safety cleat in the desired location on the wall and mark the position of the two holes using a pencil.
- We recommend position the cleat to either side of the blind and out of the reach of children.



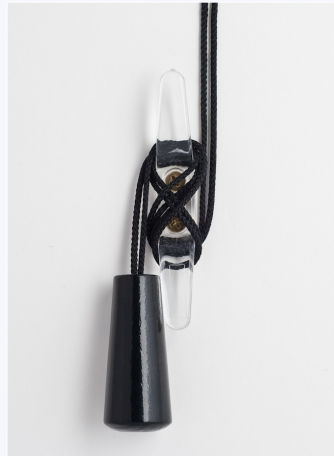
Step 2

- Remove the safety cleat and drill the positions marked.
- Once the holes are drilled place a Rawlplug into the holes.
- Use the screws provided to attach the safety cleat to the wall.



Step 3

- We recommend that the cord is wrapped around the safety cleat when the blind is not in use, as shown in the pictures below.



WARNING

Young children can strangle in the loop of pull cords, chains, tapes that operate window coverings. They can also wrap the cords around their necks. To avoid the risk of strangulation and entanglement, keep cords out of the reach of young children. Move beds, cots and furniture away from window covering cords.

