

# Sunwood®

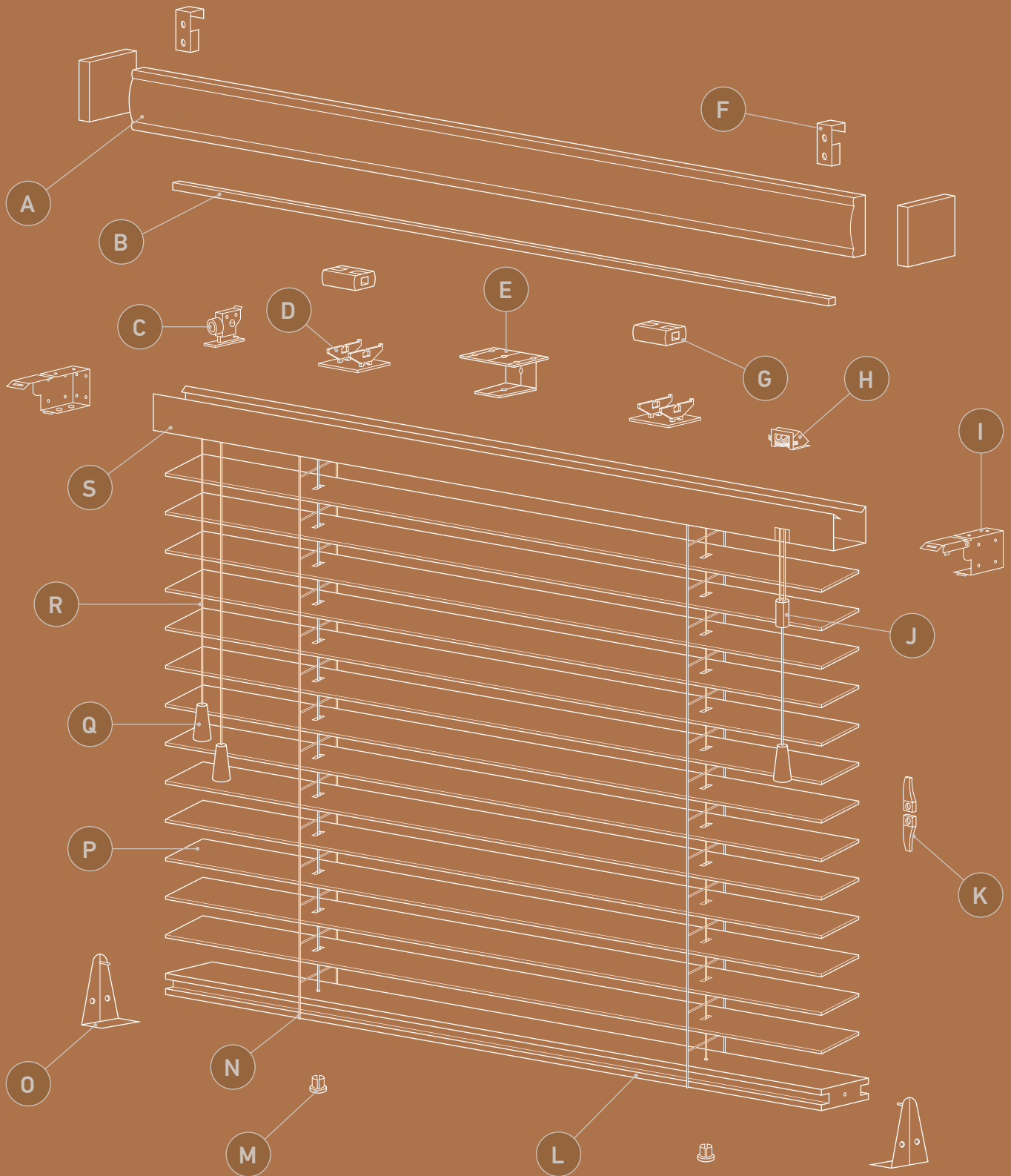
## SPECIFICATION



SWSPV1.20

Sunwood® is a range of wooden venetian blinds offering a selection of 24 colours and three slat sizes 25mm, 35mm and 50mm.

**SUNWOOD® VENETIAN BLIND - EXPLODED VIEW**



- |                                 |                               |                            |
|---------------------------------|-------------------------------|----------------------------|
| <b>A</b> Valance                | <b>H</b> Cord Lock            | <b>O</b> Hold Down Bracket |
| <b>B</b> Tilt Rod               | <b>I</b> End Bracket          | <b>P</b> Slat              |
| <b>C</b> Tilter                 | <b>J</b> Cord Condenser       | <b>Q</b> Tassel            |
| <b>D</b> Tape Roll Support      | <b>K</b> Two-Piece Cord Cleat | <b>R</b> Cord              |
| <b>E</b> Center Support Bracket | <b>L</b> Bottom Bar           | <b>S</b> Head Rail         |
| <b>F</b> Valance Clip           | <b>M</b> Bottom Bar Button    |                            |
| <b>G</b> Tape Roll              | <b>N</b> Ladder Cord          |                            |

## PRODUCT INFORMATION FACT SHEET

SLAT WIDTHS	TAPE WIDTHS AVAILABLE
25mm	19mm
35mm	25mm
50mm	25mm or 38mm

The below chart shows the slat colours and the default tape colours for each.

SUNWOOD® COLOUR	SUNWOOD® RANGE	SLAT WIDTH AVAILABLE	DEFAULT TAPE COLOUR
Acacia	Soft Grain	50mm	Dove
Ash	Essential	25, 35, 50mm	Steel
Auburn	Essential	25, 35, 50mm	Coffee
Carbon	Essential	25, 35, 50mm	Jet
Claro	Perfect Grain	50mm	Gallant
Fired Walnut	Soft Grain	50mm	Coffee
Gloss Crème	Gloss	50mm	Barley
Gloss Pure	Gloss	50mm	Cotton
Hazel	Essential	25, 35, 50mm	Jet
Honey	Essential	25, 35, 50mm	Toffee
Kalm	Essential	25, 35, 50mm	Lunar
Kohl	Essential	25, 35, 50mm	Gallant
Mirren	Essential	25, 35, 50mm	Vanilla
Morena	Essential	25, 35, 50mm	Mist
Montana	Perfect Grain	50mm	Truffle
Nordic	Perfect Grain	50mm	Mist
Oregon	Essential	25, 35, 50mm	Hessian
Polar	Essential	25, 35, 50mm	Chalk
Pure	Essential	25, 35, 50mm	Cotton
Revera	Perfect Grain	50mm	Lunar
Tanza	Soft Grain	50mm	Gallant
Tawny	Essential	25, 35, 50mm	Hessian
Tuscan Oak	Soft Grain	50mm	Toffee
Urban Oak	Perfect Grain	50mm	Truffle

## COLOUR COORDINATION

- All parts of the blind are colour coordinated.
- The headrail, bottom bar buttons and cord condenser are colour co-ordinated PVC.
- Slat, valance, bottom bar and toggles are all colour matched wood.
- Cords and ladder braid are colour matched to the wood colour.

## DIMENSIONS OF SUNWOOD® HEADRAILS

<b>25MM &amp; 35MM</b>	42mm height x 42mm depth
<b>50MM</b>	42mm height x 59mm depth

## MINIMUM & MAXIMUM WIDTHS & DROPS

<b>MINIMUM WIDTH</b>	290mm
<b>MINIMUM DROP</b>	150mm
<b>MAXIMUM WIDTH</b>	2400mm
<b>MAXIMUM DROP</b>	3000mm

## NUMBER OF LADDERS PER BLIND

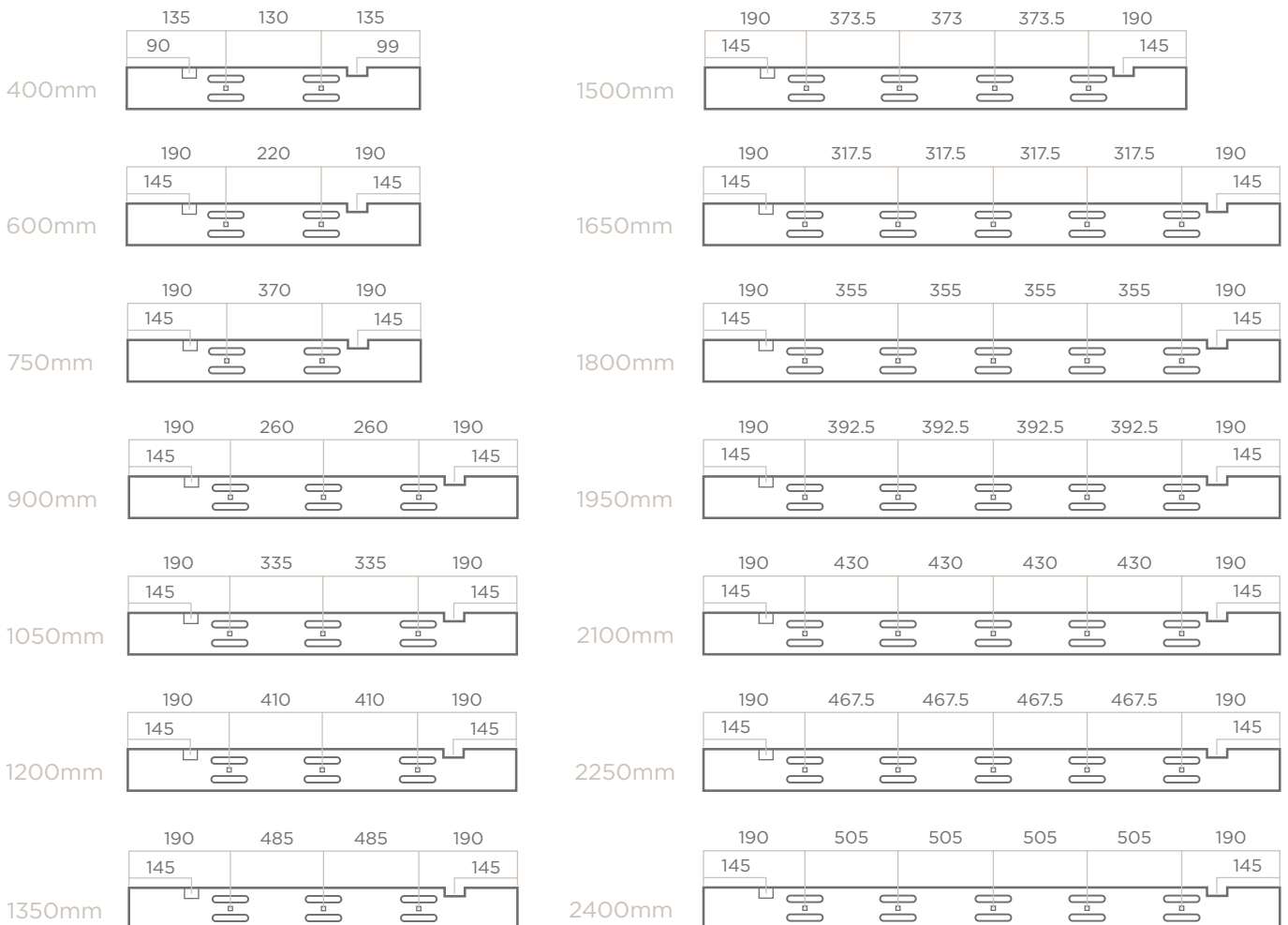
25MM & 35MM SLATS	
WIDTH	NO. OF LADDERS
400mm - 750mm	2
751mm - 1350mm	3
1351mm - 1500mm	4
1501mm - 2400mm	5

50MM SLATS	
WIDTH	NO. OF LADDERS
290mm - 900mm	2
901mm - 1350mm	3
1351mm - 1650mm	4
1651mm - 2400mm	5

(Alternative box size may be used to cover OOS, at management discretion)

## 25/35MM SUNWOOD® HEADRAIL PUNCH POSITIONS

Slat alignment is available on Sunwood Fauxwood and Sunwood with tapes. Please state at point of order.



## 50MM SUNWOOD® HEADRAIL PUNCH POSITIONS



## CONTROL OPTIONS

- Right hand raise, left hand tilt. (Standard)
- All controls on the Left.
- All controls on the Right.
- Raise on the Left, Tilt on the right.

*\*NB - All blinds between 290mm and 450mm must have standard controls.*

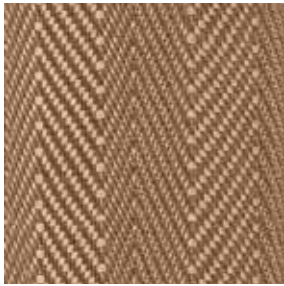


When standard controls are reversed a colour matched cover will be used to cover the original punch hole.

## ACCESSORIES

### TAPES

32 tape options are available:



**20**

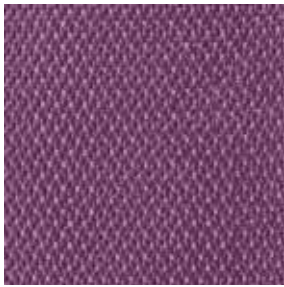
Herringbone Weave tapes, available in 3 sizes; **19mm, 25mm and 38mm.**

Herringbone Weave tapes are the standard tape default;

- 19mm tape for 25mm slat
- 25mm tape for 35mm slat
- 25mm and 38mm tape for 50mm slat

Flatweave tapes are an additional charge and charges are available as a separate price table.

Flatweave tapes are available as 38mm for 50mm slat only.



**12**

Flatweave tapes available in **38mm** only.

Each Sunwood® colour has a Decora recommended tape option which co-ordinates with the slat colour.

Customers can choose an alternative tape colour. *(Flatweave tapes will have an additional charge applied)*

Tapes are secured to the bottom of the bottom bar using complimenting tape pins.

If same number of tapes required on multiple blinds, please state at point of order.

When ordering for bay windows please state requirement for same box size at point of order if required.

Slat alignment is available on Sunwood and Sunwood blinds with tapes. Please state at point of order.

## VALANCE RETURNS/PELMETS

PLAIN FINISH	Default. Valance will be 12mm longer than the headrail of the blind.
SINGLE RETURN	Supplied with one mitred return. Internal measurement 13mm. External measurement 29mm.
DOUBLE RETURN	Supplied with two mitred returns. Internal measurement 14mm. External measurement 45mm.

*(Single and double returns can be attached to the pelmet prior to despatch if requested)*

UNCUT	Valance will be left uncut and will be 50mm longer than the width of the blind. One end of the valance will be mitred and one will be straight.
SPECIFIED LENGTH	If a customer requests for a valance to be a specific length there will be no additional charge provided the valance is no longer than the blind width + 50mm. Any valance that is longer than this cannot be made from the valance supplied with the blind and will be charged as a valance extra.

### ATTACHING THE VALANCE TO THE BLIND

Valance Clips or Dual Locks are used to secure the valance to the headrail. The dual locks are attached to the headrail of all Made to Measure blinds as standard with the valance clips included in the component box.

Additional Dual Locks can be sold individually through wholesale. The code is VC793.



Valance Clips



Dual Locks

## ADDITIONAL VALANCE OPTIONS

### CONTOUR VALANCE

- Available for 25mm, 35mm and 50mm Essential Collection only
- Contour shape Basswood valance colour matched to slat. Attached to headrail using dual locks.
- 25mm & 35mm Valance size: **51mm x 6mm**
- 50mm Valance size: **64mm x 7mm**
- Contour valance comes as standard with a matching wood tassel. One size is used for both raise and tilt operation.
- Tassels are colour matched to slat
- Additional charge for contour valance



Valance



Tassel

### BOTTOM BAR

- Essential and Soft Grain bottom bar is colour matched classic H shaped bottom bar.
- Colour co-ordinated trapezoid bottom bar on Gloss and Perfect grain collection.



H shaped



Trapezoid

## TASSELS

- Tassels will be colour matched wood as standard. There is also the option to have a metal Cylinder tassel (available in 7 colours)
- The raise will have 1 x large tassel and the lift will have 2 x small tassels.

### CYLINDER TASSEL



White  
WVH-TCWH



Brushed Aluminium  
WVH-TCBA



Chrome  
WVH-TCCE



Copper  
WVH-TCMC



Brass  
WVH-TCBS



Anthracite  
WVH-TCAN



Black  
WVH-TCBK



## BRACKETS

As standard all Sunwood® Blinds are supplied with 2 box brackets.

These brackets can be fixed in a number of ways;

<b>TOP FIX</b>	Bracket is screwed on to the top of the window recess
<b>END FIX</b>	Bracket is screwed on to the side of the window recess
<b>FACE FIX</b>	Bracket is screwed on to the front of the window frame

Blinds with three or more ladders will have a centre support bracket. For every additional ladder there will be an additional centre support bracket e.g. a 4 ladder blind will have 2 end support brackets and 2 centre support brackets. These brackets are top fix only.



Box Brackets

Centre Support Bracket

## ALTERNATIVE BRACKETS

Alternative brackets are also available. These are called Swivel brackets shown on the right. They are also available as an extension bracket. These are available for both 25mm/35mm and 50mm.

The extension swivel brackets will extend the Sunwood® blind out from the window.



Swivel Bracket



Extension Swivel Bracket

## DIMENSIONS

<b>BOX BRACKET</b>	<b>25mm &amp; 35mm</b>	50mm deep x 47mm high
	<b>50mm</b>	65mm deep x 47mm high
<b>SWIVEL BRACKET</b>	<b>25mm &amp; 35mm</b>	47mm deep
	<b>50mm</b>	65mm deep
<b>EXTENSION SWIVEL BRACKET</b>	<b>25mm &amp; 35mm</b>	Will extend the blind by 40mm (total size is 87mm)
	<b>50mm</b>	Will extend the blind by 45mm (total size is 110mm)

## HOLD DOWN BRACKETS

Hold down brackets are used to attach the bottom of the blind to a window or door to prevent it from swinging to and fro. There is a small hole on either end of the bottom bar. The hold down bracket is attached to the door with two screws then the tips of the brackets are inserted to the holes on the bottom bar.



Hold Down Bracket

## SUNWOOD® GRAIN VARIANCE

As Sunwood venetians are made using a natural product there will be a degree of variation in the shading and grain type on each blind. Please see example of different variations in shading and grain.



Acacia



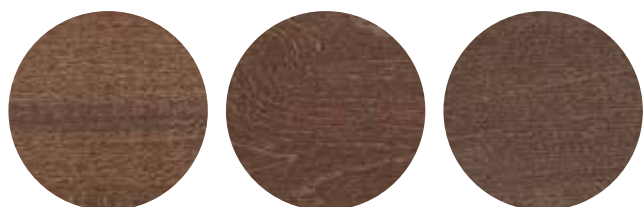
Tuscan Oak



Honey



Tawny



Auburn



Oregon

## STAINING SLAT ENDS

Customers can choose to have the ends of their slats stained. Additional 5% uplift.

**Please Note:** *We do not recommend a wood product for areas of high moisture such as bathrooms or wet rooms as it may lead to issues over time.*

## STACK HEIGHT

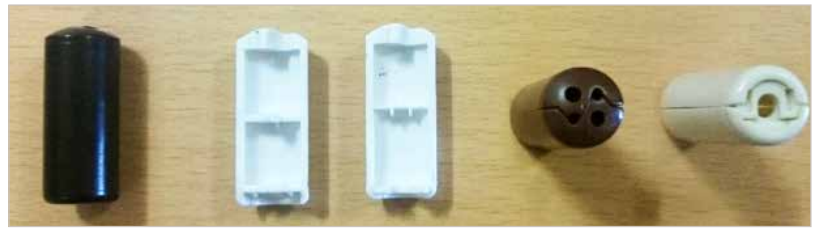
The stacking height of a blind refers to the measurement from top to bottom when the blind is fully pulled up. These stacking heights should be treated as advice only. There is a slight variance in the slat thickness and in how the slats pack with the ladder therefore each individual blind will be different.

BLIND DROP (MM)	25MM SLAT STACK HEIGHT (MM)	35MM SLAT STACK HEIGHT (MM)	50MM SLAT STACK HEIGHT (MM)
500	125	115	105
750	155	145	130
1000	185	170	145
1250	220	195	170
1500	245	220	190
1750	275	245	210
2000	310	270	230
2250	335	300	250
2500	370	325	270
2750	400	350	290
3000	430	375	310

## CHILD SAFETY

All Sunwood® blinds come with a colour co-ordinated cord condenser and a two-part safety cleat.

The cord condenser is designed to consolidate the pull cords into one string and also to break-away, stopping any loops from forming. The safety cleat is used to wrap the cord around to keep out of children's reach.



Closed

Open

Top

Bottom



Two-part safety cleat



Cord wrapped in a figure of eight motion

## CORD LENGTHS AND INSTALLATION HEIGHTS

- If the installation height is **known** the distance from the floor to bottom of pull cords shall be at least 1.5m.
  - If the installation height is **not known but the drop of the blind is less than 2.5m**, length of the pull cords shall be less than 1m.
  - If the installation height is **not known but the drop of the blind is more than 2.5m**, length of the pull cords shall be less than drop of the blind minus 1.5m.
- The standard control length on Sunwood® are 2/3 the drop of the blind.
  - If the control length is not within the child safety rules it will be reduced to the max length allowed by child safety.

**All blinds are supplied with compliant warning stickers and warning tags.**

# MOTORISATION

Sunwood venetian blinds can be motorised to offer ultimate convenience of light control and privacy in the home. At the touch of a button you can raise, lower and tilt your blinds, especially convenient for blinds in hard to reach places.

## SOMFY TILT & LIFT 25 RTS

A radio controlled battery powered motor suitable for small to medium blinds up to 2400mm wide and 2000mm drop. Somfy Tilt and Lift 25 RTS allows blinds to be raised, lowered and tilted with ease.

Voltage	12V DC
Power	9V DC - 14V DC
Torque	0.8Nm
Radio Freq	433,42 MHz
Width	540mm - 2400mm
Drop	150mm - 2000mm
Headrail	Headrail colour matched to wood slat
Control	Remote control, light sensor, wall switch or Connexoon and Somfy TaHoma smart boxes

## SOMFY SONESSE 40 RTS

A radio controlled motor suitable for medium & large blinds up to 2400mm wide & 2800mm drop. Somfy Sonesse 40 RTS offers a quiet drive motor, allowing you to raise, lower & tilt your blinds smoothly.

\*Somfy Sonesse 40 WT also available as a hard-wired option powered from your mains supply.

Voltage	230 Vac
Power	207V - 253V AC
Torque	6 Nm
Speed	20 rpm
Radio Freq	433,42 MHz
Width	700mm - 2400mm
Drop	150mm - 3000mm
Headrail	Aluminium headrail colour matched to wood slat
Control	Remote control, light sensor, wall switch or Connexoon and Somfy TaHoma smart boxes

## SOMFY TILT 50 RTS

A radio controlled battery powered motor suitable for all sizes of Sunwood blinds enabling convenient control of the tilt of your blind.

\*Somfy Tilt 50 RTS is available with Sunwood with tapes.

Voltage	12V DC
Power	9V DC - 14V DC
Torque	1 Nm
Speed	10 rpm
Radio Freq	433,42 MHz
Width	450mm - 2400mm
Drop	150mm - 3000mm
Headrail	PVC Headrail (Metal inserts on blinds over 400mm wide)
Control	Remote control, light sensor, wall switch or Connexoon and Somfy TaHoma smart boxes

 Somfy Tilt & Lift 25 RTS, Sonesse 40 RTS and Tilt RTS 50 can be combined with Somfy Connexoon and TaHoma smart boxes for optimal control of home automated products.

Single mount battery packs and dual mount battery packs are available. Requirements are dependent upon the blinds size.

## SINGLE MOUNT BATTERY PACK

		WIDTH IN METRES						
		0.60	0.80	1.00	1.20	1.40	1.60	1.80
DROP IN METRES	0.60	1.7	1.7	1.6	1.6	1.6	1.5	1.5
	0.80	1.5	1.5	1.4	1.4	1.3	1.2	1.2
	1.00	1.3	1.3	1.2	1.2	1.1	1	1
	1.20	1.2	1.1	1.1	1	1	0.9	0.8
	1.40	1	1	0.9	0.9	0.8	0.7	-
	1.60	0.9	0.9	0.8	0.8	0.7	-	-
	1.80	0.8	0.8	0.7	0.7	-	-	-
	2.00	0.8	0.7	0.6	0.6	-	-	-

**BATTERY LIFE**

- Between 1-2 years
- Less than 1 year
- Not available

## DUAL MOUNT BATTERY PACK

		WIDTH IN METRES						
		0.60	0.80	1.00	1.20	1.40	1.60	1.80
DROP IN METRES	0.60	3.4	3.3	3.3	3.2	3.1	3	2.9
	0.80	3	2.9	2.8	2.7	2.6	2.5	2.4
	1.00	2.6	2.5	2.4	2.3	2.2	2.1	1.9
	1.20	2.3	2.2	2.1	2	1.9	1.7	1.6
	1.40	2.1	2	1.9	1.7	1.6	1.5	-
	1.60	1.9	1.7	1.6	1.5	1.4	-	-
	1.80	1.7	1.6	1.4	1.3	-	-	-
	2.00	1.5	1.4	1.3	1.2	-	-	-

**BATTERY LIFE**

- Between 3-4 years
- Between 2-3 years
- Between 1-2 years
- Not available

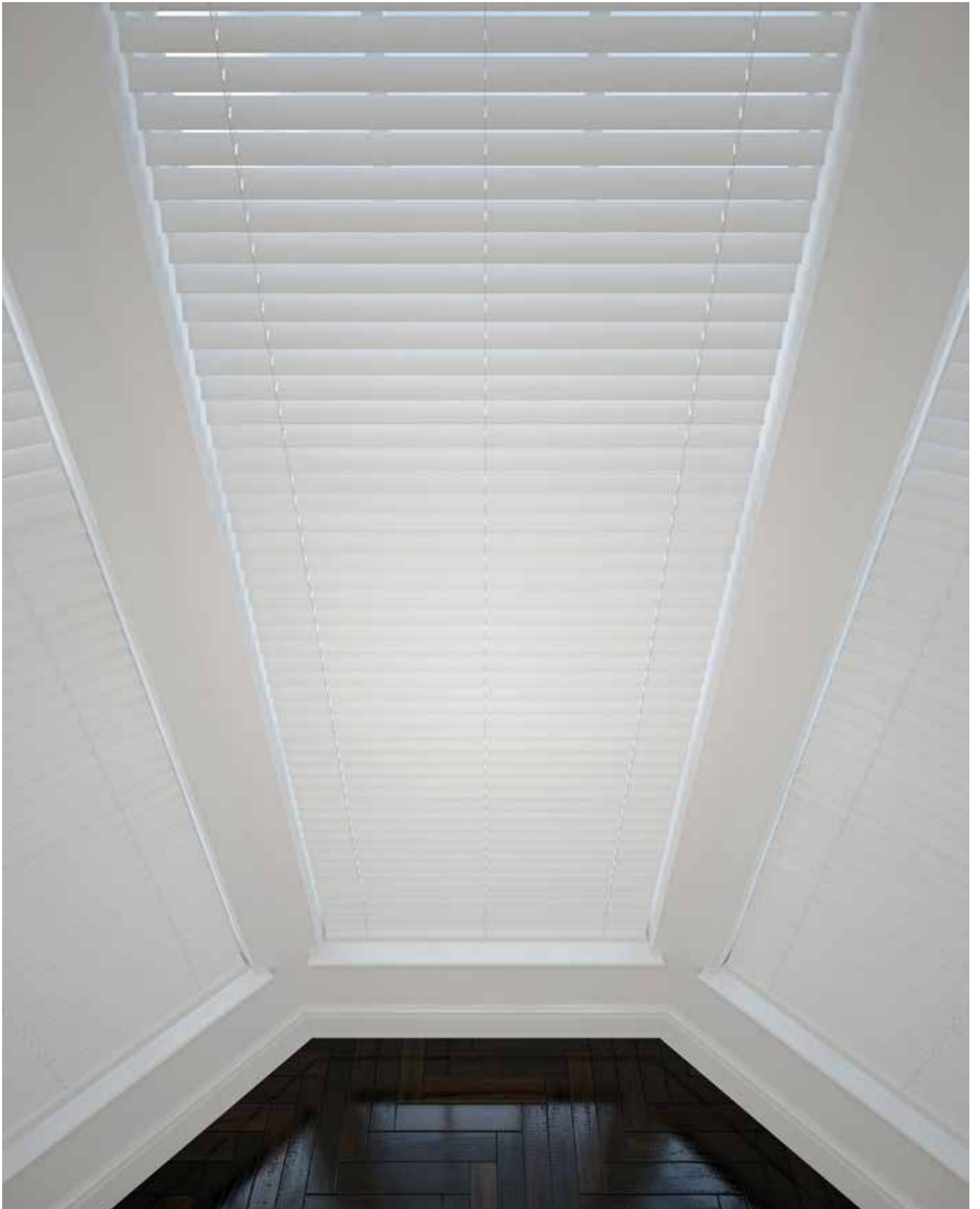
We recommend dual batteries for blinds in the 'Blue' zone.

\*\* Minimum cut down 75cm down to 54cm.

# Sunwood<sup>®</sup>

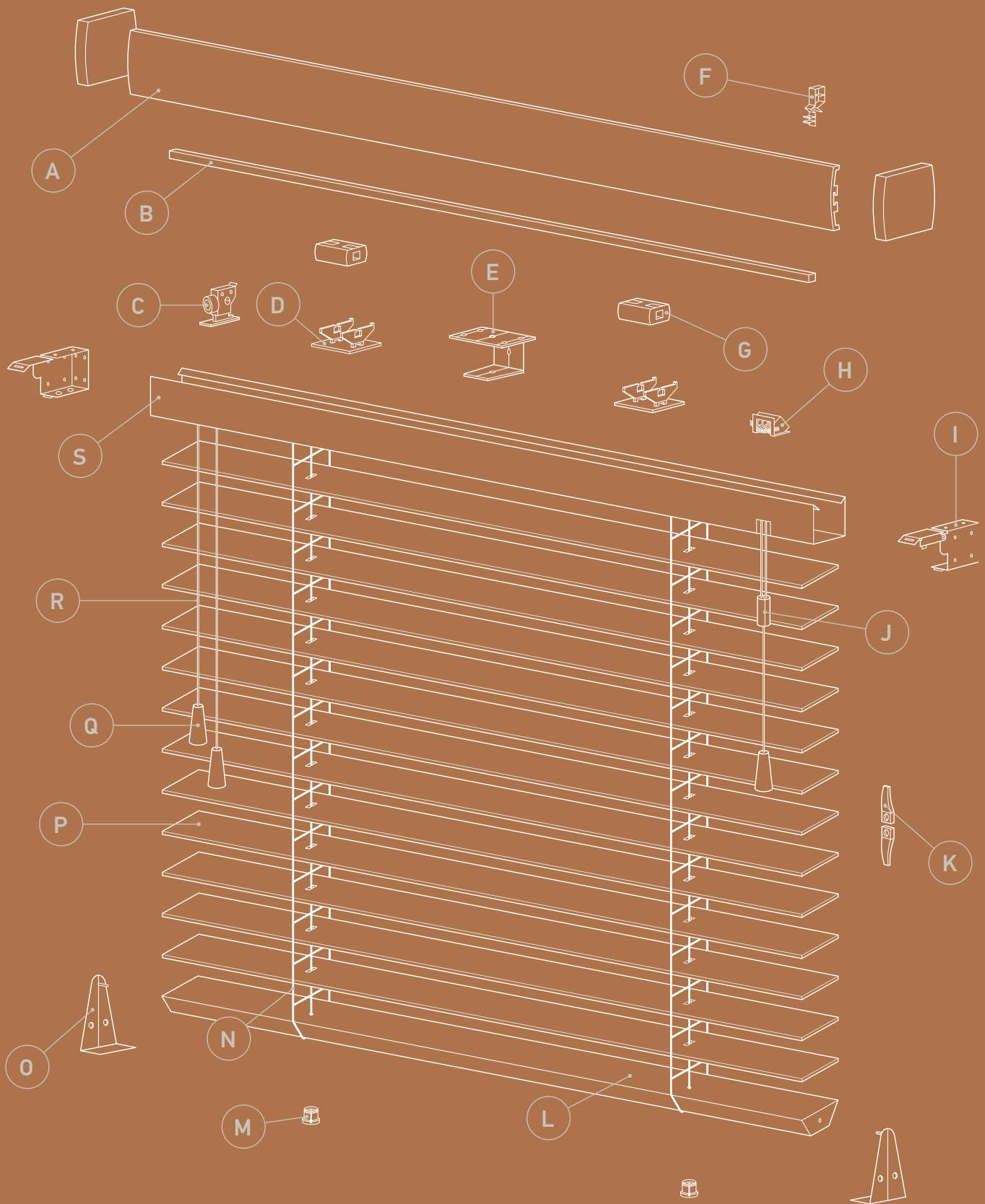
FAUX WOOD

## SPECIFICATION



Sunwood® Fauxwood is a range of high quality PVC Venetians which emulate a sophisticated wood grain or a contemporary smooth finish which makes it the perfect solution for areas of high moisture such as bathrooms or kitchens.

**SUNWOOD® FAUXWOOD VENETIAN BLIND - EXPLODED VIEW**



- |                                 |                               |                            |
|---------------------------------|-------------------------------|----------------------------|
| <b>A</b> Valance                | <b>H</b> Cord Lock            | <b>O</b> Hold Down Bracket |
| <b>B</b> Tilt Rod               | <b>I</b> End Bracket          | <b>P</b> Slat              |
| <b>C</b> Tilter                 | <b>J</b> Cord Condenser       | <b>Q</b> Tassel            |
| <b>D</b> Tape Roll Support      | <b>K</b> Two-Piece Cord Cleat | <b>R</b> Cord              |
| <b>E</b> Center Support Bracket | <b>L</b> Bottom Bar           | <b>S</b> Head Rail         |
| <b>F</b> Valance Clip           | <b>M</b> Bottom Bar Button    |                            |
| <b>G</b> Tape Roll              | <b>N</b> Ladder Cord          |                            |

## PRODUCT INFORMATION FACT SHEET

SLAT WIDTHS	TAPE WIDTHS AVAILABLE
35mm	25mm
50mm	25mm or 38mm

The below chart shows the slat colours and the default tape colours for each.

FAUXWOOD COLOUR	DEFAULT TAPE COLOUR
True	Cotton
True Fine Grain	Cotton
Mirage	Chalk
Mirage Fine Grain	Chalk
Linara	Barley
Linara Fine Grain	Barley
Desert Oak	Hessian
Amber	Toffee
Stratus	Steel
Lima	Coffee
Callo	Coffee
Gravity	Mist
Gravity Fine Grain	Mist
Mantis	Pebble
Mantis Fine Grain	Pebble
Mission	Lunar
Mission Fine Grain	Lunar
Athena	Flint
Athena Fine Grain	Flint
Orion	Gallant
Orion Fine Grain	Gallant
Serene	Cotton
Serene Fine Grain	Cotton

**Desert Oak, Amber, Stratus, Lima and Callo are only available as fine grain finishes.**

### COLOUR COORDINATION

- All parts of the blind are colour coordinated.
- The headrail, bottom bar buttons and cord condenser are colour co-ordinated PVC.
- Toggles are all colour matched wood.
- Cord and ladder braid are colour coordinated to slats.

**Please Note:** *Due to PVC having a low heat distortion temperature, coupled with increased heat absorption of darker colours, a degree of warping may occur where blinds are subject to high levels of direct sunlight. We would advise that in such areas lighter colours from the Sunwood faux wood collection and any colour from our Sunwood Real wood collection are selected.*

### BOXED BLINDS ARE SUPPLIED IN ONE DROP - 1300MM

1300mm - This can be lengthened to:	3000mm on widths 350mm-1300mm
	2400mm on widths 1400mm-2600mm



## DIMENSIONS OF FAUXWOOD HEADRAILS

<b>35MM</b>	42mm height x 42mm depth
<b>50MM</b>	42mm height x 59mm depth

Head rails include metal inserts

## MINIMUM & MAXIMUM WIDTHS & DROPS

<b>MINIMUM WIDTH</b>	290mm
<b>MINIMUM DROP</b>	150mm
<b>MAXIMUM WIDTH</b>	2600mm
<b>MAXIMUM DROP</b>	3000mm

## NUMBER OF LADDERS PER BLIND

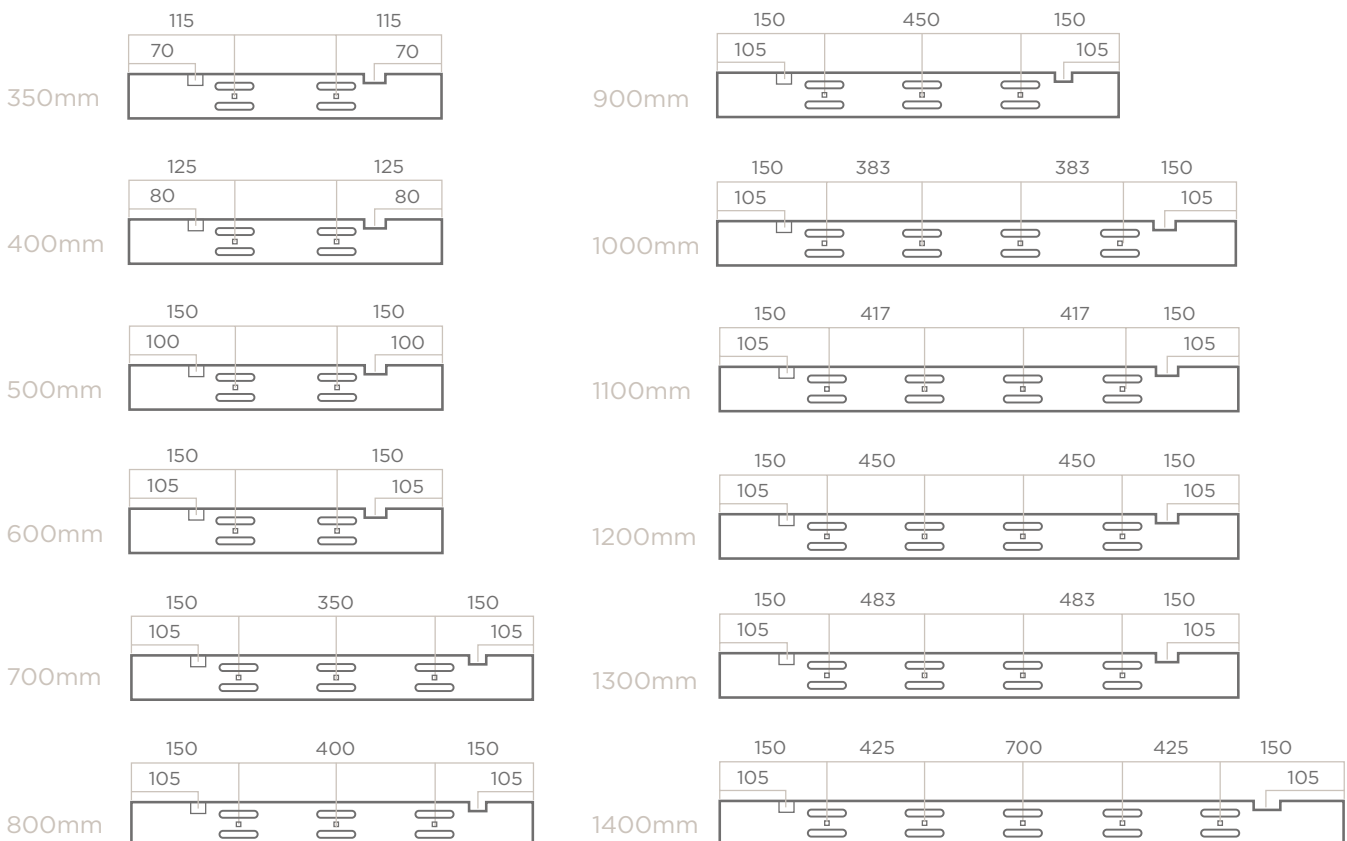
35MM SLATS	
Width	No. of ladders
350mm-600mm	2
601mm-900mm	3
901mm-1300mm	4
1301mm-1500mm	5
1501mm-1800mm	6
1801mm-2100mm	7
2101mm-2400mm	8
2401mm-2600mm	9

50MM SLATS	
Width	No. of ladders
350mm-600mm	2
601mm-1000mm	3
1001mm-1300mm	4
1301mm-1600mm	5
1601mm-1900mm	6
1900mm-2100mm	7
2101mm-2400mm	8
2401mm-2600mm	9

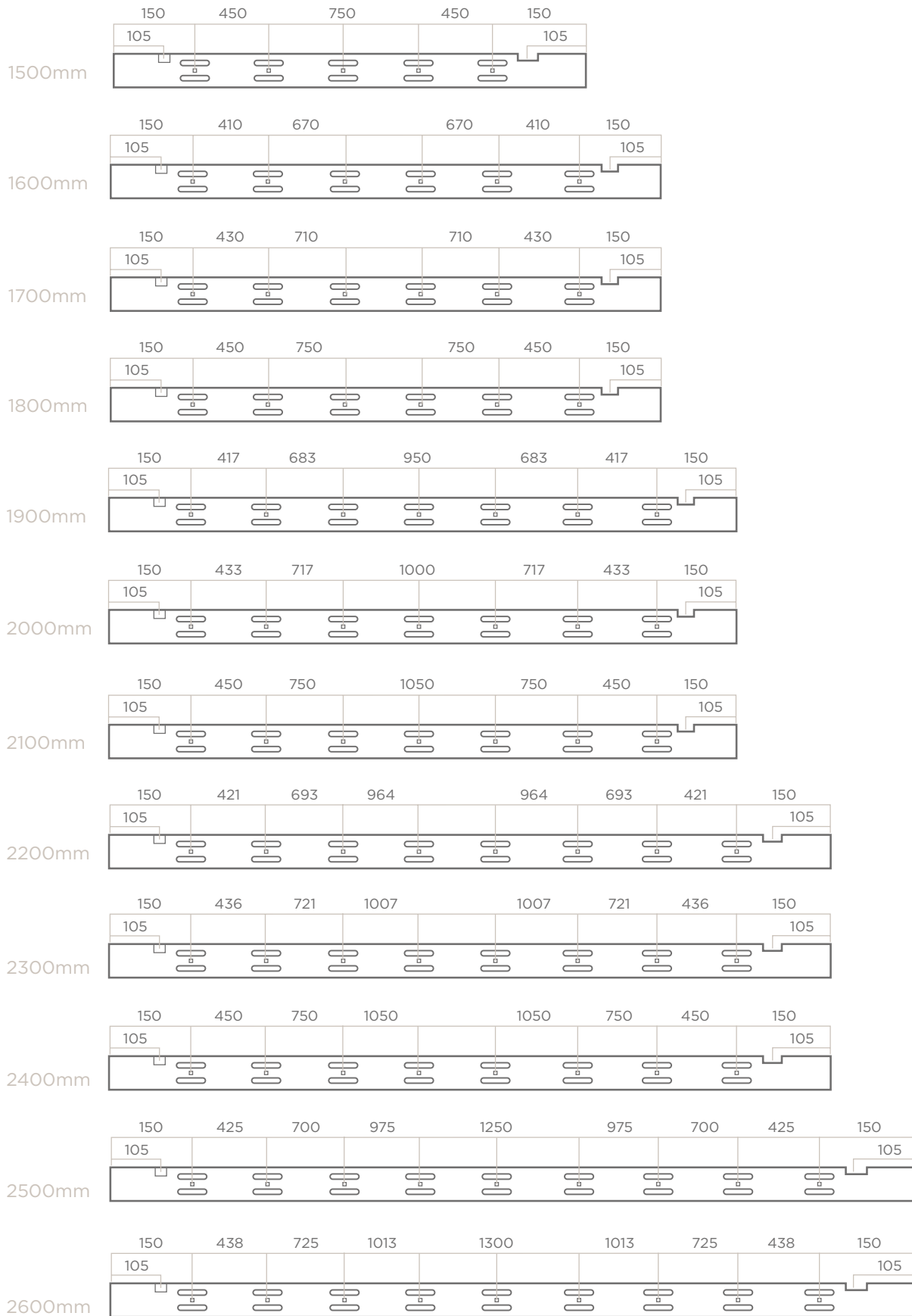
(Alternative box size may be used to cover OOS, at management discretion)

Slat alignment is available on Sunwood Fauxwood and Sunwood Fauxwood with tapes. Please state at point of order.

## 35MM FAUXWOOD HEADRAIL PUNCH POSITIONS



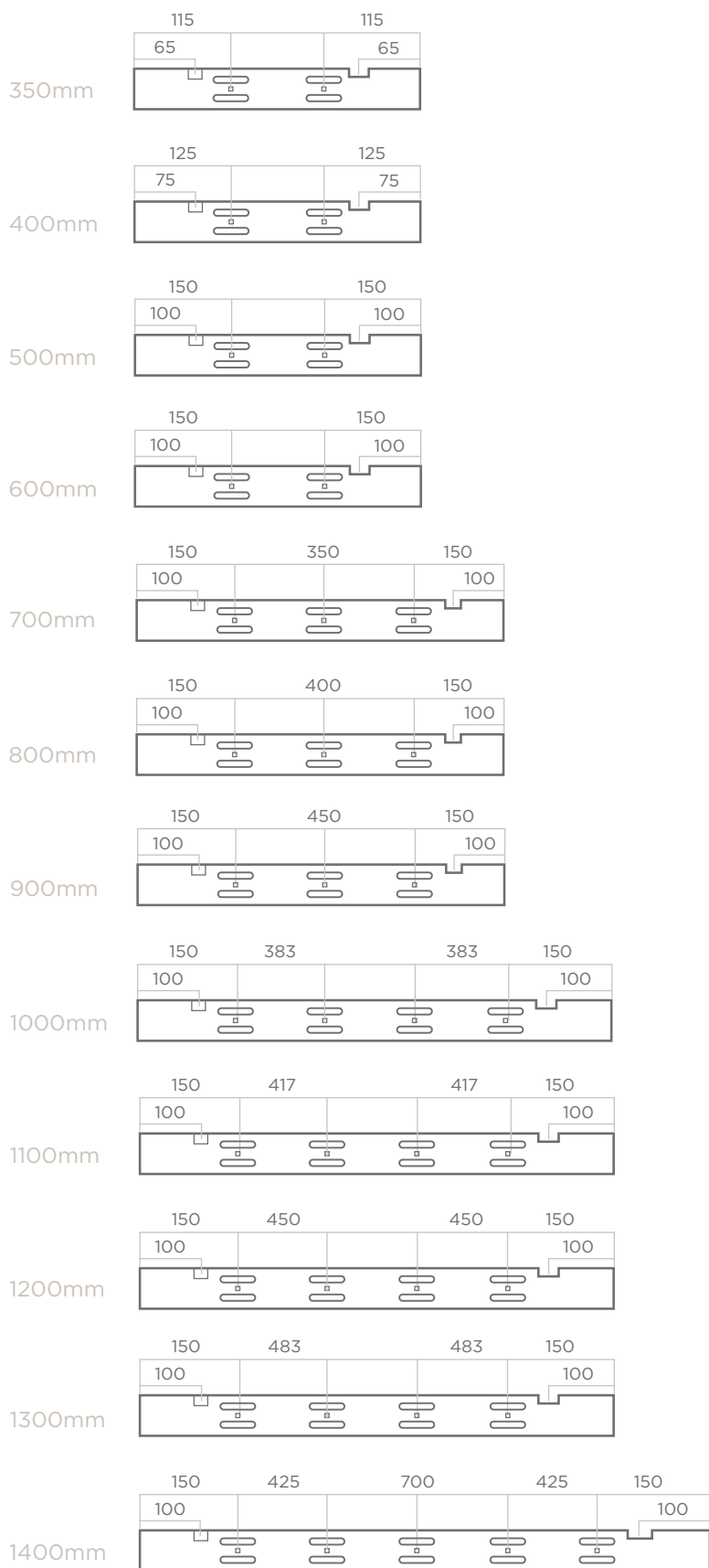
## 35MM FAUXWOOD HEADRAIL PUNCH POSITIONS



## CONTROL OPTIONS

- Standard control only.
- Raise on the right, tilt on the left.

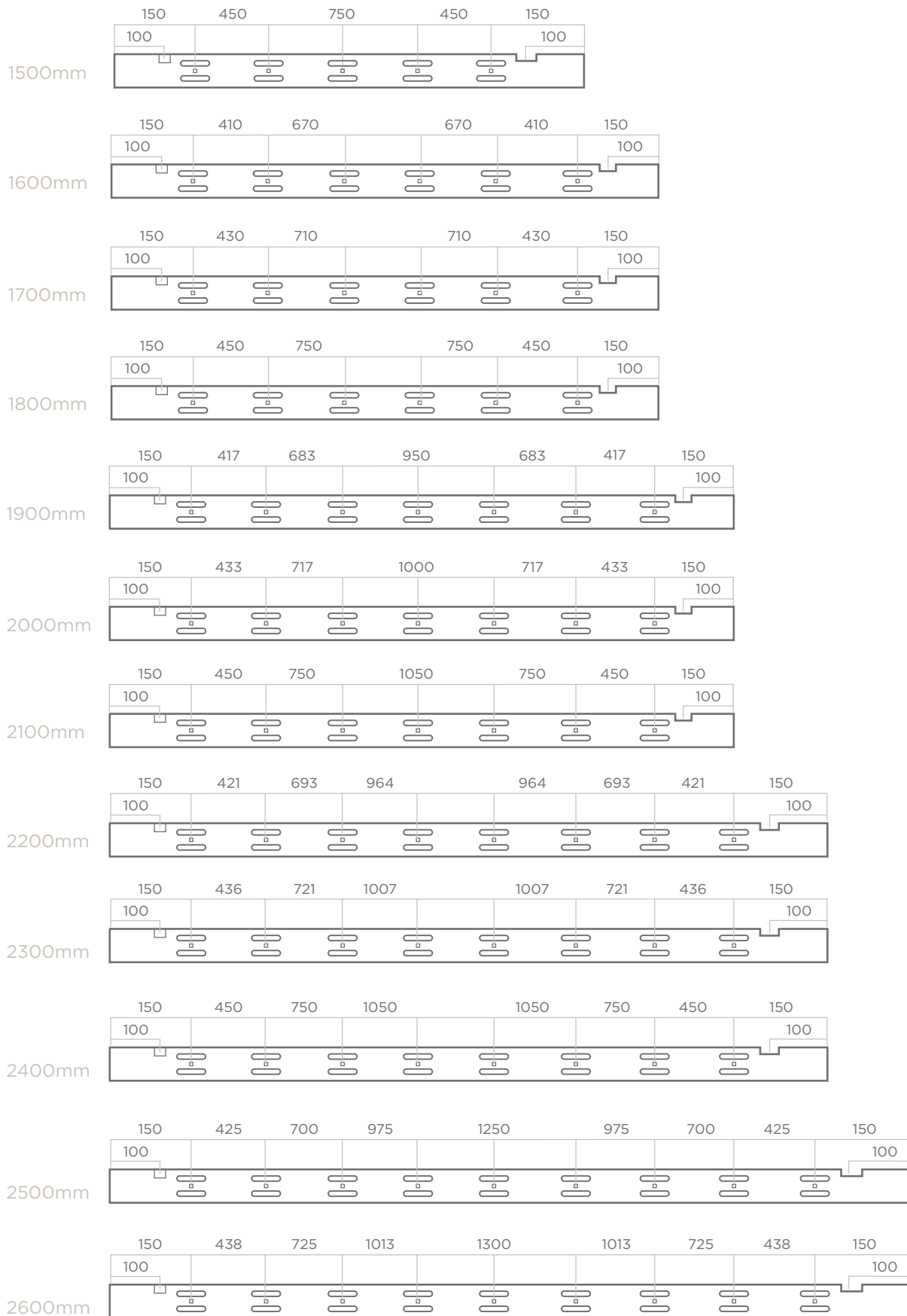
## 50MM FAUXWOOD HEADRAIL PUNCH POSITIONS



## CONTROL OPTIONS

- Standard control only.
- Raise on the right, tilt on the left.

## 50MM FAUXWOOD HEADRAIL PUNCH POSITIONS



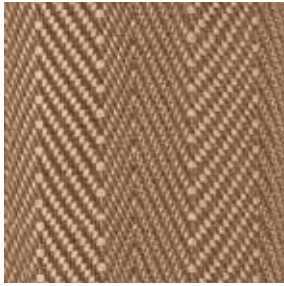
## CONTROL OPTIONS

- Standard control only.
- Raise on the right, tilt on the left.

## ACCESSORIES

### TAPES

32 tape options are available:



**20**

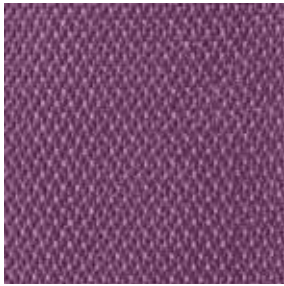
Herringbone Weave tapes, available in 2 sizes; **25mm and 38mm.**

Herringbone Weave tapes are the standard tape default;

- 25mm tape for 35mm slat
- 25mm and 38mm tape for 50mm slat

Flatweave tapes are an additional charge and charges are available as a separate price table.

Each Fauxwood colour has a Decora recommended tape option which co-ordinates with the slat colour.



**12**

Flatweave tapes available in **38mm** only.

Customers can choose an alternative tape.

*(Flatweave tapes will have an additional charge applied)*

Tapes are secured to the bottom of the bottom bar using complimenting tape pins.

If same number of tapes required on multiple blinds, please state at point of order.

When ordering for bay windows please state requirement for same box size at point of order if required. Slat alignment is available on Sunwood Fauxwood and Sunwood Fauxwood with tapes. Please state at point of order.

### VALANCE

- D-shaped valance.
- Valance clips are attached to head rail.
- Due to weight of PVC valance, dual locks are not used.
- Embossed blinds are finished with an embossed valance.



Valance Clip

### VALANCE RETURNS/PELMETS

PLAIN FINISH	Default. Valance will be 12mm longer than the headrail of the blind.
SINGLE RETURN	Supplied with one mitred return. Internal measurement 13mm. External measurement 29mm.
DOUBLE RETURN	Supplied with two mitred returns. Internal measurement 14mm. External measurement 45mm.

*(single and double returns can be attached to the pelmet prior to despatch if requested)*

UNCUT	Valance will be left uncut and will be 45mm longer than the width of the blind. One end of the valance will be mitred and one will be straight.
SPECIFIED LENGTH	If a customer requests for a valance to be a specific length there will be no additional charge provided the valance is no longer than the blind width + 50mm. Any valance that is longer than this cannot be made from the valance supplied with the blind and will be charged as a valance extra.

## ADDITIONAL VALANCE OPTIONS

### SILVER CONTOUR VALANCE

- Available for Sunwood® Fauxwood.
- Available for 35mm and 50mm slat widths.
- Silver contour valance is manufactured from PVC and finished with silver lacquer.
- Valance attached to headrail using clear plastic valance clips (come as standard with valance).
- The valance clip slides into the groove at the back of the valance and the clip is then attached to the headrail.
- 35mm Valance size: **51mm x 6mm**  
50mm Valance size: **64mm x 7mm**
- Silver contour valance comes as standard with a specific tassel. One size is used for both raise and tilt operation. Tassels are colour matched to slat and produced from PVC.



Valance



Tassel

### BOTTOM BAR

- Colour Co-ordinated trapezoid.
- Bottom bar is not embossed.
- Bottom bar is solid PVC.
- 35mm Bottom Bar size: **35mm depth x 13mm height**
- 50mm Bottom Bar size: **50mm depth x 13mm height**
- Bottom Bar buttons have a pulley wheel; this is used for larger blinds (boxed blinds size: 1401mm wide up). This pulley wheels enables easier rise for wider blinds.

## TASSELS

- Tassels will be colour matched wood as standard.
- Same design as Sunwood®. The raise will have 1 x large tassel and the tilt will have 2 x small tassels.
- There are options to have Metal tassels: Bullet, Bell or Cylinder.  
(See below for options available.)
- If metal tassels are chosen all three raise and lift tassels will be the same size.

### BELL TASSEL



Chrome  
RT292



Matt Nickel  
RT290



Brushed Brass  
RT293



Black  
RT291

### BULLET TASSEL



White  
RT288



Brushed  
Aluminium  
RT285



Chrome  
RT281



Copper  
RT287



Brass  
RT283



Anthracite  
RT286



Black  
RT280

### CYLINDER TASSEL



White  
WVH-TCWH



Brushed  
Aluminium  
WVH-TCBA



Chrome  
WVH-TCCE



Copper  
WVH-TCMC



Brass  
WVH-TCBS



Anthracite  
WVH-TCAN



Black  
WVH-TCBK

## BRACKETS

As standard all Fauxwood Blinds are supplied with 2 box brackets.

These brackets can be fixed in a number of ways;

<b>TOP FIX</b>	Bracket is screwed on to the top of the window recess
<b>END FIX</b>	Bracket is screwed on to the side of the window recess
<b>FACE FIX</b>	Bracket is screwed on to the front of the window frame

Blinds with 3 or more ladders will have a centre support bracket. This will depend on the width.

<b>3 and 4 ladders</b>	1 x centre support bracket
<b>5 ladders</b>	2 x centre support brackets
<b>6 and 7 ladders</b>	3 x centre support brackets
<b>8 and 9 ladders</b>	4 x centre support brackets



Box Brackets

Centre Support Bracket

## DIMENSIONS

<b>BOX BRACKET</b>	<b>35mm</b>	50mm deep x 47mm high
	<b>50mm</b>	65mm deep x 47mm high

## HOLD DOWN BRACKETS

Hold down brackets are used to attach the bottom of the blind to a window or door to prevent it from swinging to and fro. There is a small hole on either end of the bottom bar. The hold down bracket is attached to the door with two screws then the tips of the brackets are inserted to the holes on the bottom bar.



Hold Down Bracket

## STACK HEIGHT

The stacking height refers to the measurement from top to bottom when the blind is fully pulled up. These stacking heights should be treated as advice only. There is a slight variance in the slat thickness and in how the slats pack with the ladder therefore each individual blind will be different.

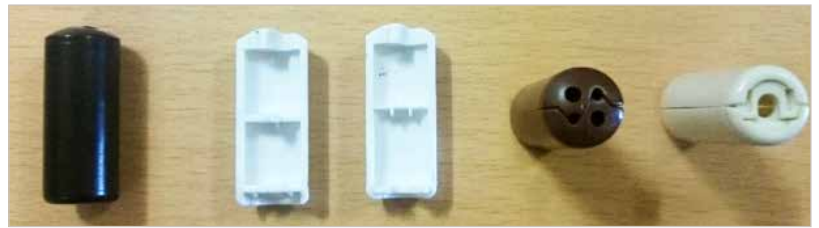
<b>BLIND DROP (MM)</b>	<b>35MM SLAT STACK HEIGHT (MM)</b>	<b>50MM SLAT STACK HEIGHT (MM)</b>
500	115	105
750	145	130
1000	170	145
1250	195	170
1500	220	190
1750	245	210
2000	270	230
2250	300	250
2500	325	270
2750	350	290
3000	375	310



## CHILD SAFETY

All Sunwood® Fauxwood blinds come with a colour co-ordinated cord condenser and a two-part safety cleat.

The cord condenser is designed to consolidate the pull cords into one string and also to break-away, stopping any loops from forming. The safety cleat is used to wrap the cord around to keep out of children's reach.



Closed

Open

Top

Bottom



Two-part safety cleat



Cord wrapped in a figure of eight motion

## CORD LENGTHS AND INSTALLATION HEIGHTS

- If the installation height is **known** the distance from the floor to bottom of pull cords shall be at least 1.5m.
- If the installation height is **not known but the drop of the blind is less than 2.5m**, length of the pull cords shall be less than 1m.
- If the installation height is **not known but the drop of the blind is more than 2.5m**, length of the pull cords shall be less than drop of the blind minus 1.5m.
- The standard control length on Sunwood® Fauxwood are 2/3 the drop of the blind.
- If the control length is not within the child safety rules it will be reduced to the max length allowed by child safety.

All blinds are supplied with compliant warning stickers and warning tags.

## MOTORISATION

Sunwood Fauxwood venetian blinds can be motorised to offer ultimate convenience of light control and privacy in the home.

### SOMFY TILT 50 RTS

A radio controlled battery powered motor suitable for all sizes of Sunwood blinds enabling convenient control of the tilt of your blind.

Voltage	12V DC
Power	9V DC - 14V DC
Torque	1 Nm
Speed	10 rpm
Radio Freq	433,42 MHz
Width	450mm - 2896mm
Drop	150mm - 3000mm
Headrail	PVC Headrail (Metal inserts on blinds over 400mm wide)
Control	Remote control, light sensor, wall switch or Connexoon and Somfy TaHoma smart boxes