

Measuring Instructions: Replacement Vertical Blind Slats

Measuring replacement slats for vertical blinds couldn't be simpler.

1) Take a slat / louvre down from the current blind you have and lay it on a table or on the floor, making sure the slat is flat. You can order in cm, mm or inches.

2) Measure the width of the slat, it will be either 89mm (3.5") or 127mm (5") wide. All fabrics are available in 89mm. 127mm widths are less common, so please make sure you select that size from the filter to ensure you are choosing the available fabrics, then select 127mm during the ordering process.

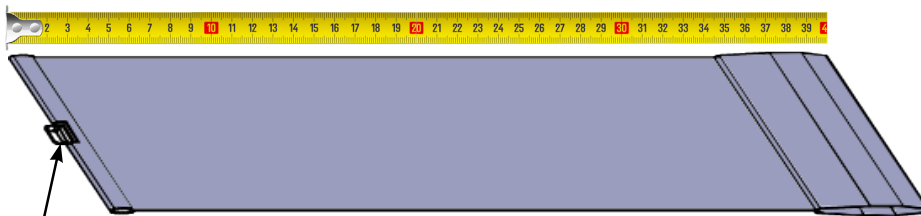
HOW TO MEASURE VIDEO



89mm

127mm

3) Measure from the top of the fabric to the bottom of the fabric as illustrated below and enter this size when ordering. Do not include the hook of the hanger in your measurement. This is called Fabric Size.



Double holed hangers used in our replacement blind slats.



DO NOT INCLUDE THE HOOK OF THE HANGER THAT PROTRUDES ABOVE THE TOP OF THE FABRIC

4) Count how many slats are required for each window.

5) Decide which bottom weight option you require. You can choose from white weights & chain, beige weights and chain or sewn in weights with no chain.

TOP TIP:

IF YOU HAVE MULTIPLE WINDOWS WITH EXACTLY THE SAME DROP, GROUP THE QUANTITIES TOGETHER AND ORDER AS 1 SET, THIS IS CHEAPER THAN ORDERING AS SEPARATE WINDOWS