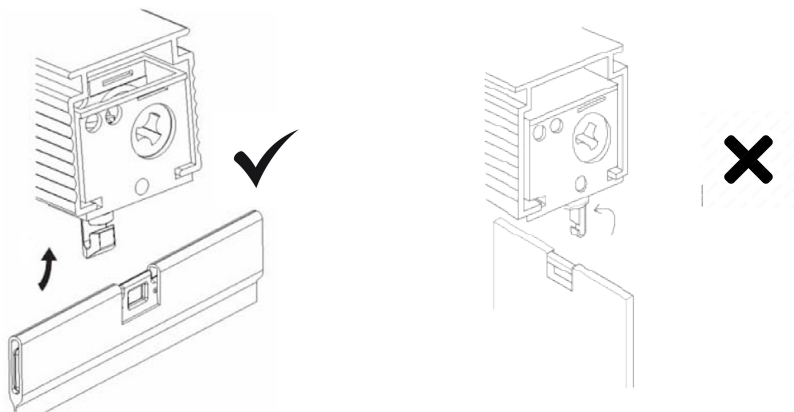


## Fitting Instructions: Replacement Vertical Blind Slats

Before hanging the fabric make sure that the headrail hooks are facing the left or right hand side of the headrail, not the front or back of the headrail as shown in the illustrations below.

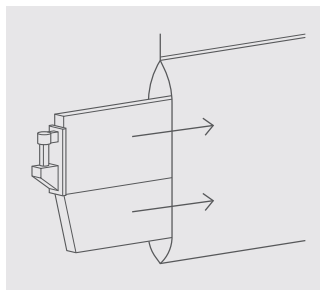


Often replacement slats are delivered with the weights and chains packed separately. If so follow the simple instructions below.

---

### BOTTOM WEIGHTS

Insert the bottom weights into the vertical vane bottom pockets.



### STABILISING CHAIN

Push connector on stabilising chain onto the ear of each bottom weight. Stabilising chain should be connected to both sides of the blind.

