

Measuring Instructions: Electric Roller Blinds for Bifolding Doors

Our electric roller blinds for bifolding doors are designed to be fitted **inside the recess** of the door reveal. The blinds are not intended to be screwed into the doors themselves.

The blinds can only be installed on bifolding door recesses where the doors concertina outwards.

Useful Information & Tips

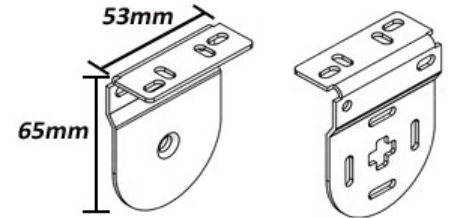
Use a metal tape measure as cloth ones can be inaccurate.

The overall width of roller blinds including brackets is approximately 35mm wider than the fabric.

Make sure the recess is deep enough taking door handles into account allowing 53mm for the depth of the bracket.

Blinds are produced within an operating tolerance of +/-3mm.

Bracket Dimensions



Door Configurations

Bifolding doors come in various configurations, most commonly **3/4/5/6 doors**.

You can decide how many blinds you require for the design of your doors.

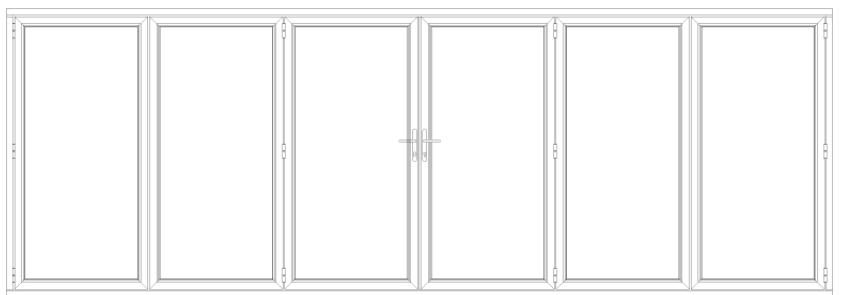
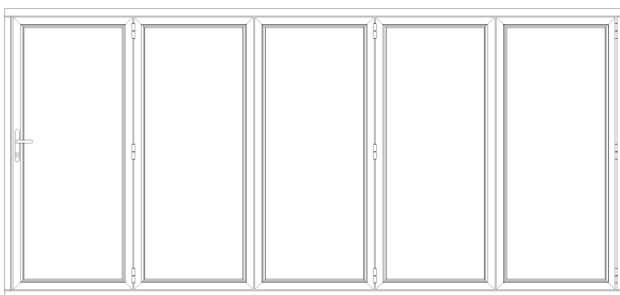
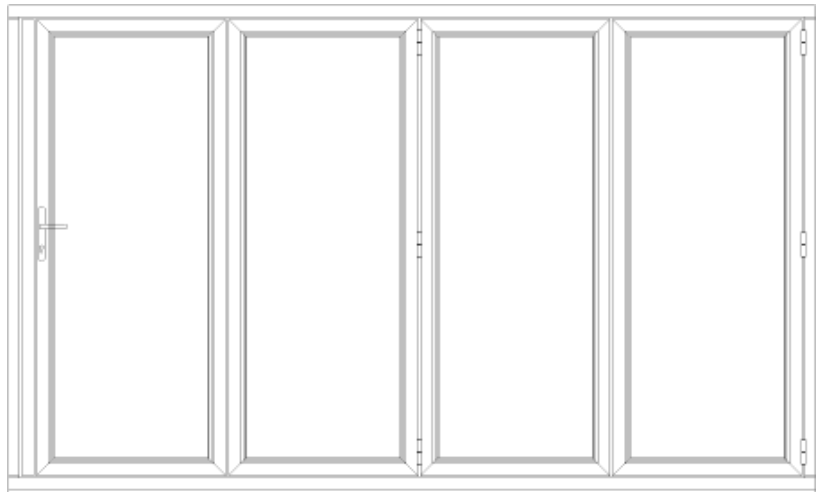
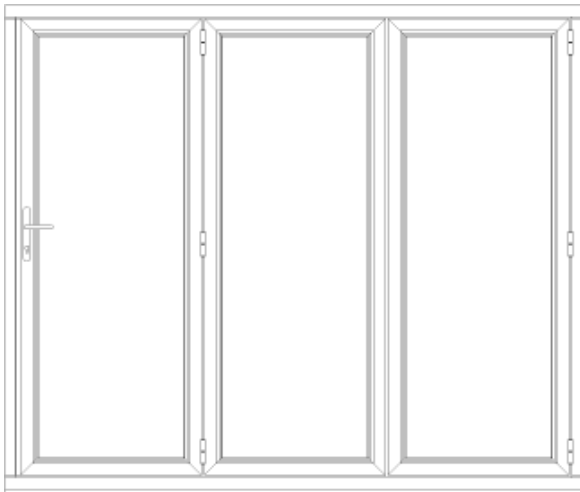
Typical configurations are:

3 doors = 3 blinds

4 doors = 2 blinds or 4 blinds

5 doors = 2+2+1 blinds or 5 blinds

6 doors = 2+2+2 blinds



Decide if you want:

a) Blinds of **equal size** to each other to cover the recess space

or

b) Blinds of **different sizes** to each other to cover the recess space.

a) Equal sized blinds

Width

Measure the overall recess space from wall to wall then divide by the number of blinds you require then **subtract 5mm** from each blind size.

e.g. Overall recess 3500mm with 4 doors. 2 blinds required = $3500/2 = 1750\text{mm} - 5\text{mm} = 1745\text{mm}$ each blind

Drop

Measure from the top inside recess where the brackets are fitted to the floor.

Order each blind as **bracket to bracket size**.

b) Different sized blinds

Width

Use a pencil to place a small mark on the recess where each bracket will be fitted, then measure the size between each mark.

Drop

Measure from the top inside recess where the brackets are fitted to the floor, do not make any deductions.

Order each blind as **bracket to bracket size**.

Follow the same instructions for all door configurations.

